

TARALAY® EMOTION

gerflor.com
gerflor.asia



Gerflor[®]
theflooringroup



34-43

PANAME / COUTURE / ROMA / ANGLE / TERRA / PYRAMID / WOOD



- ① Protecsol® surface treatment
- ② Transparent wear layer
- ③ Printed design
- ④ Reinforced layer
- ⑤ Compact back layer

- Protecsol® surface treatment with excellent resistance to scratching, scuffing & easy cleaning.
- No DOP, no heavy-metal, no benzene, no formaldehyde & 100% compliant with REACH, friendly to health and environment.
- Transparent wear layer with printed designing, highest durability.
- Recommended for high traffic area in education, office, retail, hospital and institutional buildings.
- Compact backing with reinforced layer, high resistance to static and dynamic indentation under rolling loads, and excellent dimensional stability.



Compact sheet, without foam backing

LOW VOC EMISSION, GOOD INDOOR AIR QUALITY



COMPOSITION

- 100% REACH compliant**
- FREE of formaldehyde
- FREE of heavy metals
- FREE of solvent



WELLNESS

- Health**
 - Antibacterial activity (inhibits growth > 99%)
- Safety**
 - Good slip resistance
- Comfort**
 - Walking comfort



RECYCLED CONTENT

- 20% recycled content
- 100% REACH compliant recycled content



RECYCLABILITY

- 100% recyclable product



INDOOR AIR QUALITY

- TVOC emissions 10 times below standard (TVOC < 100 µg/m³ after 28 days)
- Floorscore certified
- Comply with AgBB protocol
- No formaldehyde emission



LCA

- Eco-designed according to a product specific Life Cycle Analysis
- Manufactured in an Iso 14001
- Contribution to many Green Building Schemes (LEED, HQE, BREEAM...)
- Patented surface treatment Evercare™ to reduce drastically the use of chemical products and water and ensure the lowest environmental impact



INSTALLATION

Installation should be carried out in accordance with local standards. Subfloor should be smooth, hard, clean and dry prior to laying. Where applicable the subfloor must incorporate an effective Damp Proof Membrane. The material must be allowed to acclimatize 24 hours before installation in a room temperature of between 18-24°C. All seams must be hot welded using Gerflor® matching welding rod.

MAINTENANCE

Maintenance should be carried out regularly to retain in the appearance and durability of the floor. The floorcovering should be maintained with regular sweeping and damp mopping using a neutral cleanser. More intense cleaning should be carried out using a fine spray cleaning pad under a floor machine, or for larger areas combined machine cleaning.

TARALAY® EMOTION



1154 Earth Nature - Terra

NEW



1125 Sand - Roma

NEW



1132 Sunshine - Couture

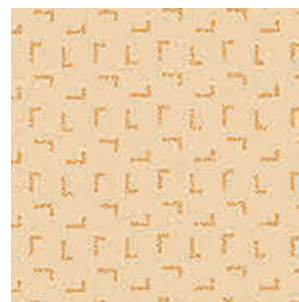


NEW



1122 Beige - Paname

NEW



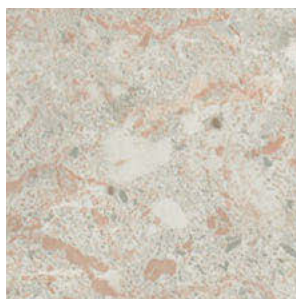
1135 Sand - Angle



1131 Alabaster - Couture



0707 Natural - Couture



1101 Cream - Roma



1140 Earth - Angle

NEW



1137 Pumice - Angle

NEW



1143 Volcano - Angle

NEW



0711 Capuccino - Couture



0801 Sable - Paname



0809 Clay - Paname



0802 Light Grey - Paname



TARALAY® EMOTION



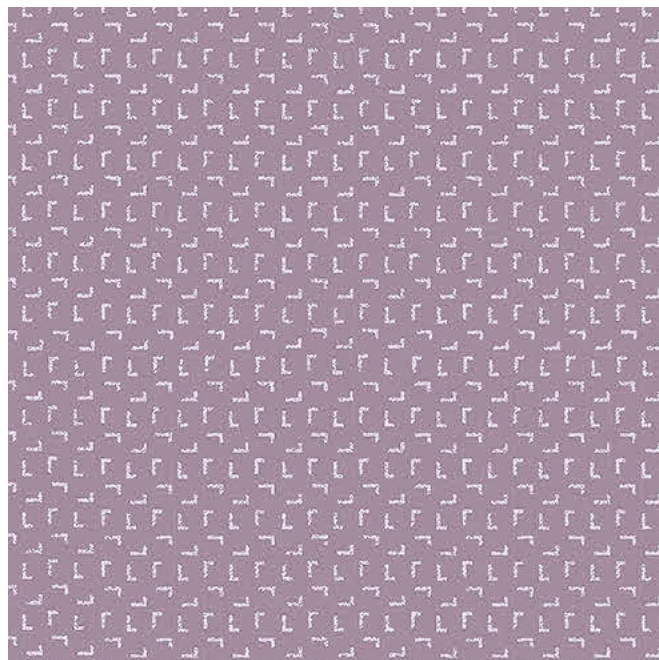
NEW

1134 Maple - Angle



NEW

1127 Corn - Roma



NEW

1141 Sugilite - Angle



NEW

1142 Sunset - Angle



NEW

1120 Yellow - Couture



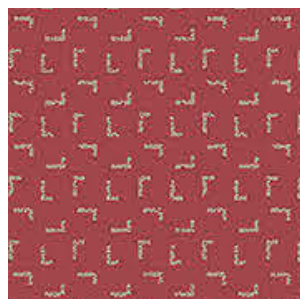
NEW

1126 Orange - Roma



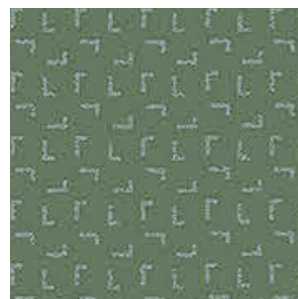
NEW

1105 Rouge - Roma



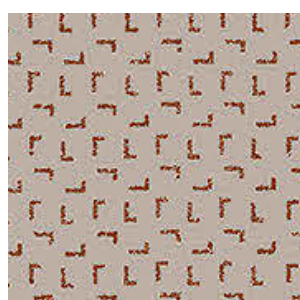
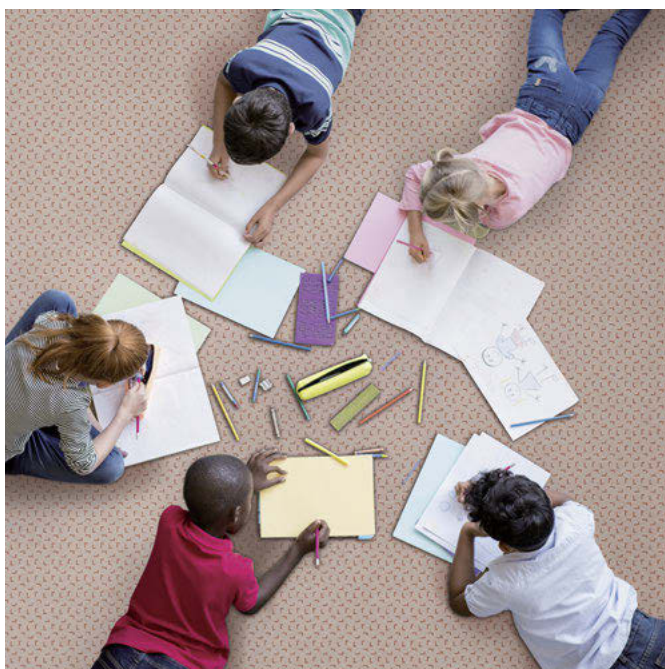
NEW

1146 Mahogany - Angle



NEW

1144 Forest - Angle



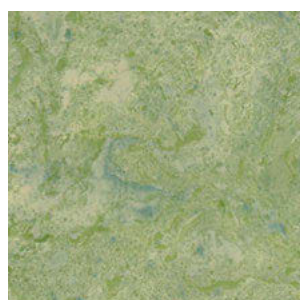
NEW

1136 Mountain - Angle

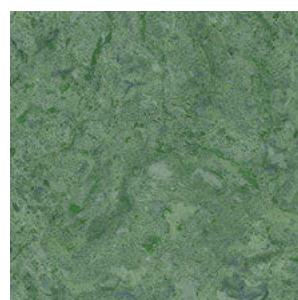


NEW

1118 Grass - Couture



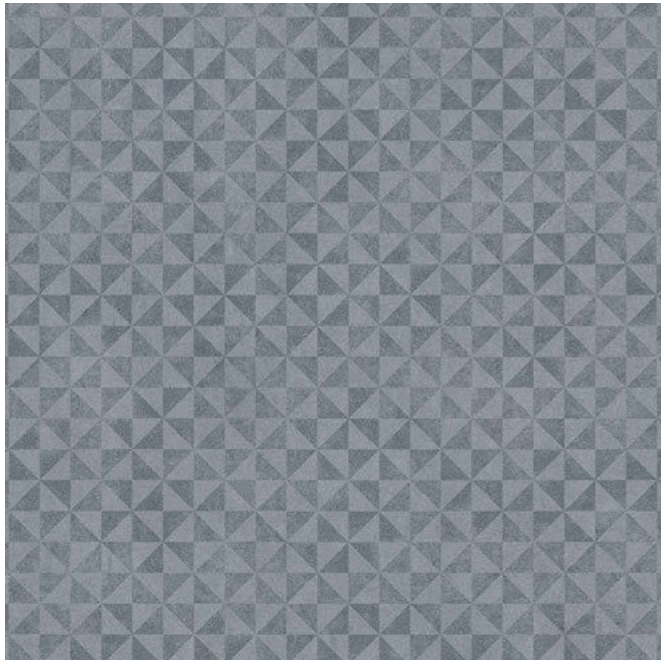
1106 Spring - Roma



NEW

1128 Emerald - Roma

TARALAY® EMOTION



1158 Blue - Pyramid

NEW



1124 Sapphire - Paname

NEW



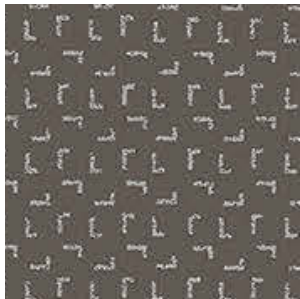
1159 Sky - Angle

NEW



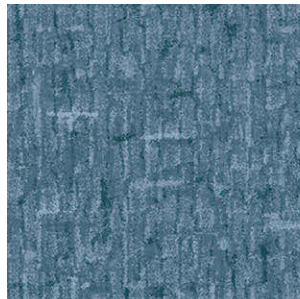
1138 Aegean - Angle

NEW



1145 Carbon - Angle

NEW



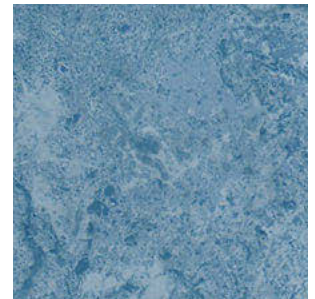
1119 Ocean - Couture

NEW



1139 Mediterranean - Angle

NEW



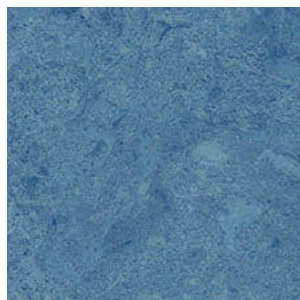
1111 Ciel - Roma

NEW



0806 Anthracite - Paname

NEW



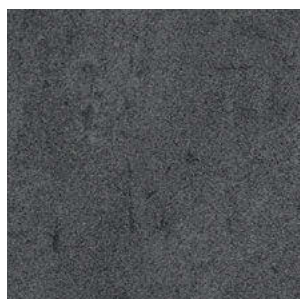
1130 Sapphire - Roma

NEW



1110 Ink - Roma

NEW



1121 Black - Paname

NEW

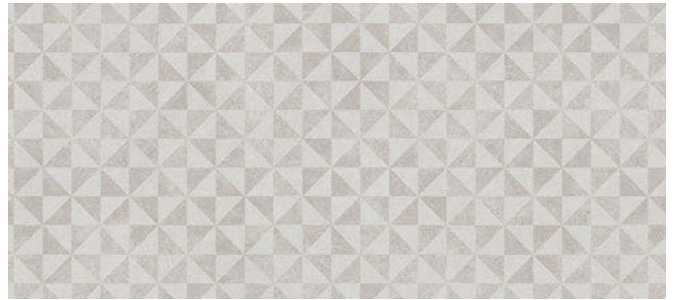


TARALAY® EMOTION



1117 Grey - Couture

NEW



NEW

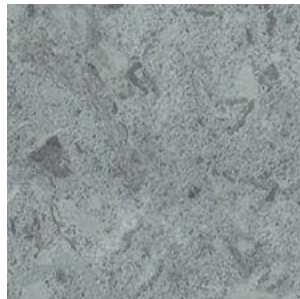
1156 Beige - Pyramid



0804 Slate - Paname



0811 Calaité - Paname



1108 Painting - Roma



1155 Dark Grey - Terra

NEW



0712 Smoke - Couture



1129 Smoked - Roma

NEW



1157 Grey - Pyramid

NEW



0708 Dark - Couture



1123 Grey - Paname

NEW



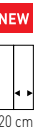
TARALAY® EMOTION WOOD



0504 Cream - Fontenay



1152 Beige - Muse



1147 Light Beige - Albion



TARALAY® EMOTION WOOD



NEW



1148 Natural Yellow - Albion



NEW



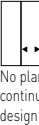
1116 Golden - Arcy



NEW



1115 Buckwheat - Amboise



1003 Chamois - Arcy



0503 Honey - Fontenay



TARALAY® EMOTION WOOD



0402 Light - Chinon



1150 Mid Brown - Albion



0902 Rustic - Amboise



0505 Brown - Fontenay



TARALAY® EMOTION WOOD



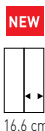
1149 Light Grey - Albion



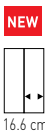
0903 Beige - Amboise



1151 Deep Grey - Albion



1153 Brown Grey - Muse



1114 Dark Grey - Amboise

TARALAY® EMOTION



TARALAY® EMOTION is a multilayered compact vinyl floor covering, available in 2m width sheet. The product comprises a printed design protected by a transparent wear layer, and the compact backing with reinforced layer resists static and dynamic perforation under rolling loads and provides excellent dimensional stability.

TARALAY® EMOTION is treated with ProtecSol® surface treatment with excellent resistance to scratching, scuffing & easy cleaning. It has no DOP, no heavy-metal, no benzene, no formaldehyde & 100% compliant with REACH, which is friendly to health and environment, recommended for high traffic area in education, office, retail, hospital and institutional buildings.

TARALAY® EMOTION

Paname / Couture / Roma / Angle / Terra / Pyramid / Wood

DESCRIPTION

Total thickness	ISO 24346 [EN 428]	mm	2.0	2.6	2.0	2.6
Wearlayer thickness	ISO 24340 [EN 429]	mm	0.7	0.7	0.55	0.55
Weight	ISO 23997 [EN 430]	g/m ²	2800	3800	2900	4000
Width of sheet	ISO 24341 [EN 426]	cm	200	200	200	200
Length of sheet	ISO 24341 [EN 426]	lm	20	15	20	15

CLASSIFICATION

Norm / Product specification	-	-	ISO 10582 [EN 649]	ISO 10582 [EN 649]	ISO 10582 [EN 649]	ISO 10582 [EN 649]
European classification	ISO 10874 [EN 685]	class	34-43	34-43	33-42	33-42
Fire rating	EN 13501 - 1	class	Bfl-s1	Bfl-s1	Bfl-s1	Bfl-s1
Slip resistance wet	DIN EN 16165	class	R9	R9	R9	R9

PERFORMANCES

Type binder content	ISO 10582	type	I	I	I	I
Dimensional stability	ISO 23999 [EN 434]	%	≤ 0.4	≤ 0.4	≤ 0.4	≤ 0.4
Residual indentation	ISO 24343-1 [EN 433]	mm	≤ 0.1	≤ 0.1	≤ 0.1	≤ 0.1
Castor chair test	ISO 4918 [EN 425]	-	OK	OK	OK	OK
Thermal conductivity	ISO 10456 [EN 12524]	W/(m.k)	0.25	0.25	0.25	0.25
Colour fastness	ISO 105 - B02	degree	≥ 6	≥ 6	≥ 6	≥ 6
Chemical product resistance	ISO 26987 [EN 423]	-	OK	OK	OK	OK
Surface treatment	-	-	ProtecSol®	ProtecSol®	ProtecSol®	ProtecSol®
Anti-bacterial activity (E.coli - S.aureus) (1)	ISO 22196	-	> 99% inhibits growth	> 99% inhibits growth	> 99% inhibits growth	> 99% inhibits growth
Antiviral activity (human coronavirus 229E)	ISO 21702	-	99.7% after 5h	99.7% after 5h	99.7% after 5h	99.7% after 5h

ENVIRONMENT / INDOOR AIR QUALITY

TVOC after 28 days	ISO 16000 - 6	µg/m ³	< 100	< 100	< 100	< 100
Certification	-	-	Floorscore®	Floorscore®	Floorscore®	Floorscore®

CE MARKING

CE	EN 14041	-	
----	----------	---	--

(1) The implementation of an effective cleaning regime is the most important defence against infections.

JUN 06-30-2021 Version - Indicative documentation cost USD 6.24
Gerflor® has a policy of continuous product improvement, it reserves the right to change design and specifications without notice.

Gerflor Don't forget our complementary ranges!

Handrails

Wall Coverings & Protections

Entrance mats

Skirtings & Profiles

WE CARE | WE ACT. Our Commitments for a Sustainable future

CARBON FOOTPRINT*

-20 % kg CO₂ equivalent/m² between 2020 and 2025

BIO-SOURCED CONTENT***

10 % by 2025

RECYCLED CONTENT

30 % by 2025

ADHESIVE FREE**

35 % by 2025

ANNUAL VOLUME RECYCLED

60 000 t by 2025

* Scopes 1 and 2 defined in the GHG protocol *** % of activity with biosourced materials ** % of activity - adhesive free solution

Be connected!

www.gerflor.com

#Gerflor



GERFLOR ASIA Tel.: + 86-21-63578818